



Shyam

residency





Garden



Children Park



Joggers Park



Gymnasium



C.C.Road

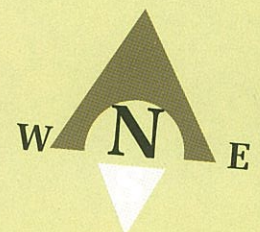


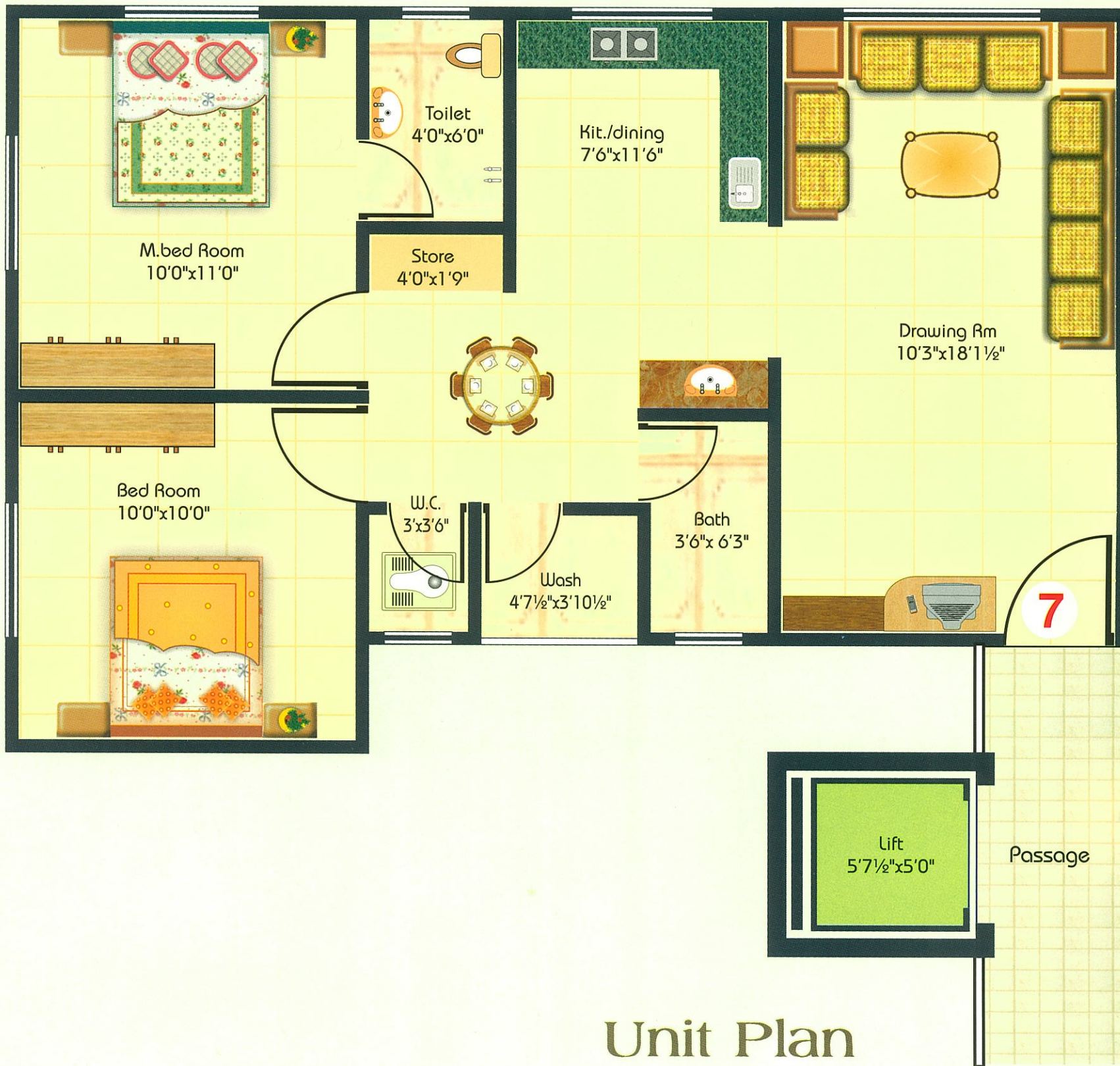
Indoor Games

Facilities

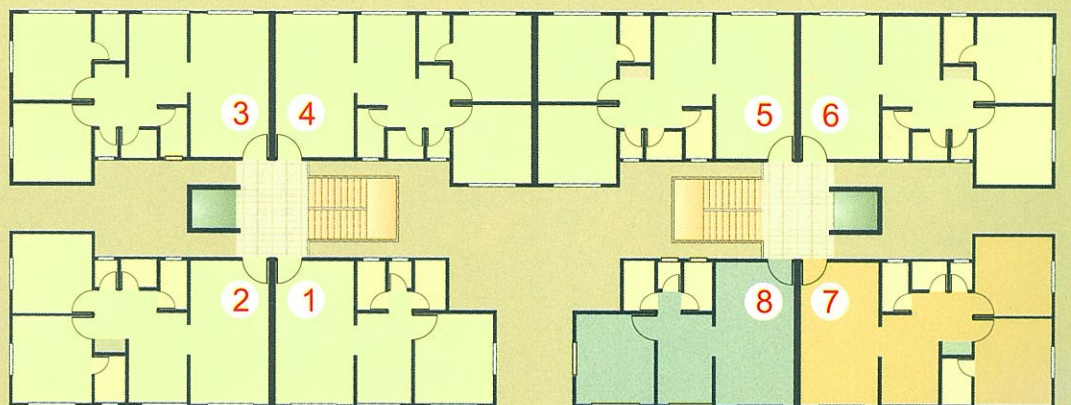


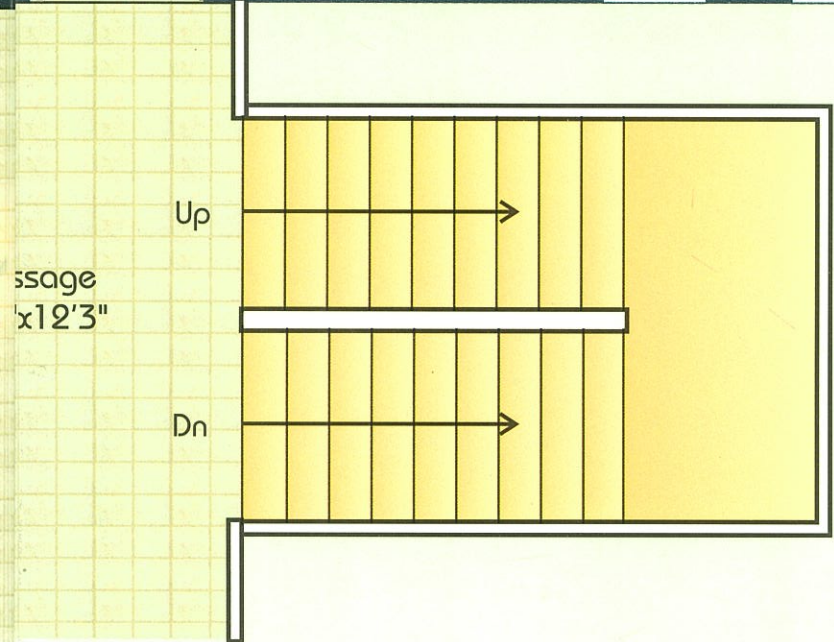
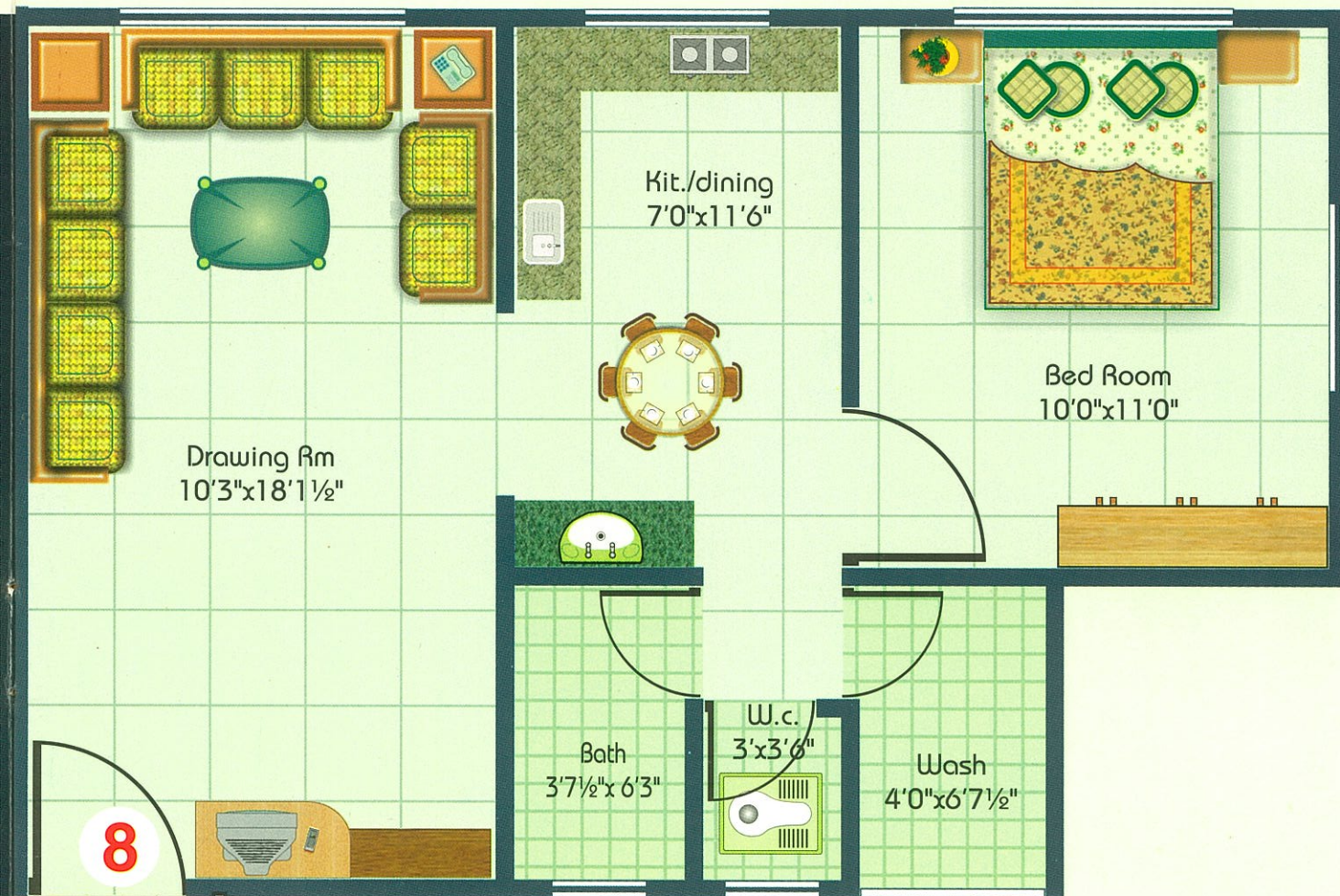
Layout Plan



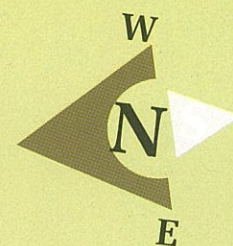
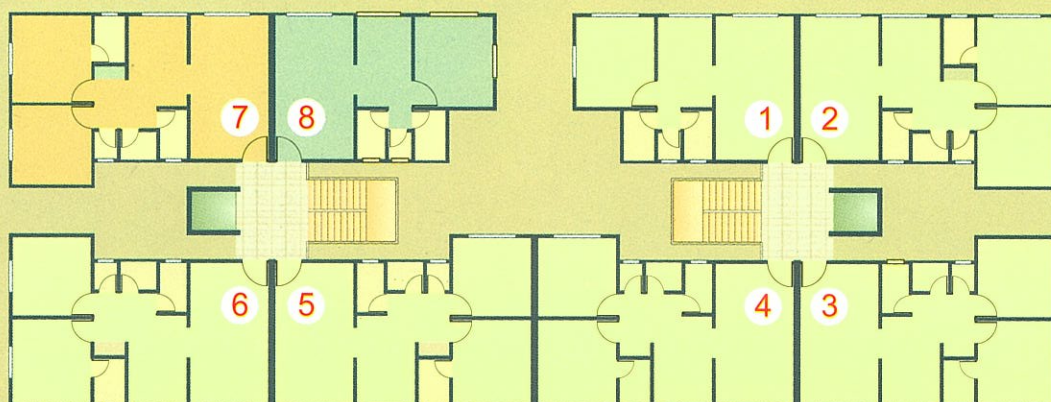


A - Type





E - Type



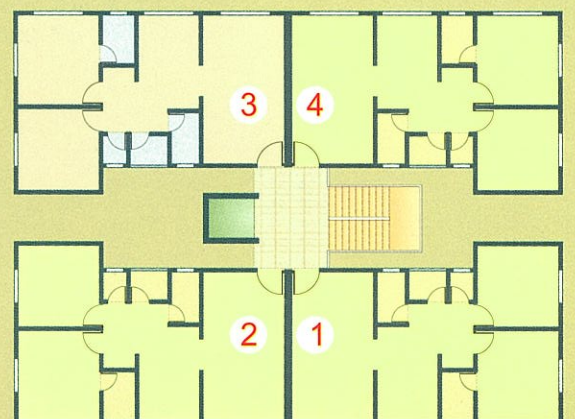
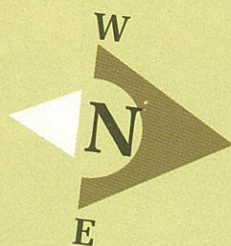






Unit Plan

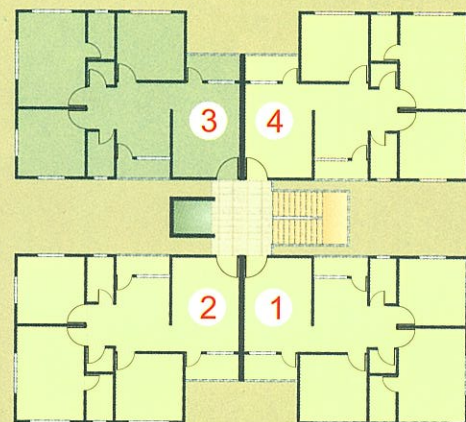
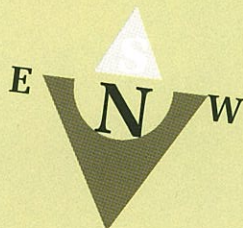
B - Type

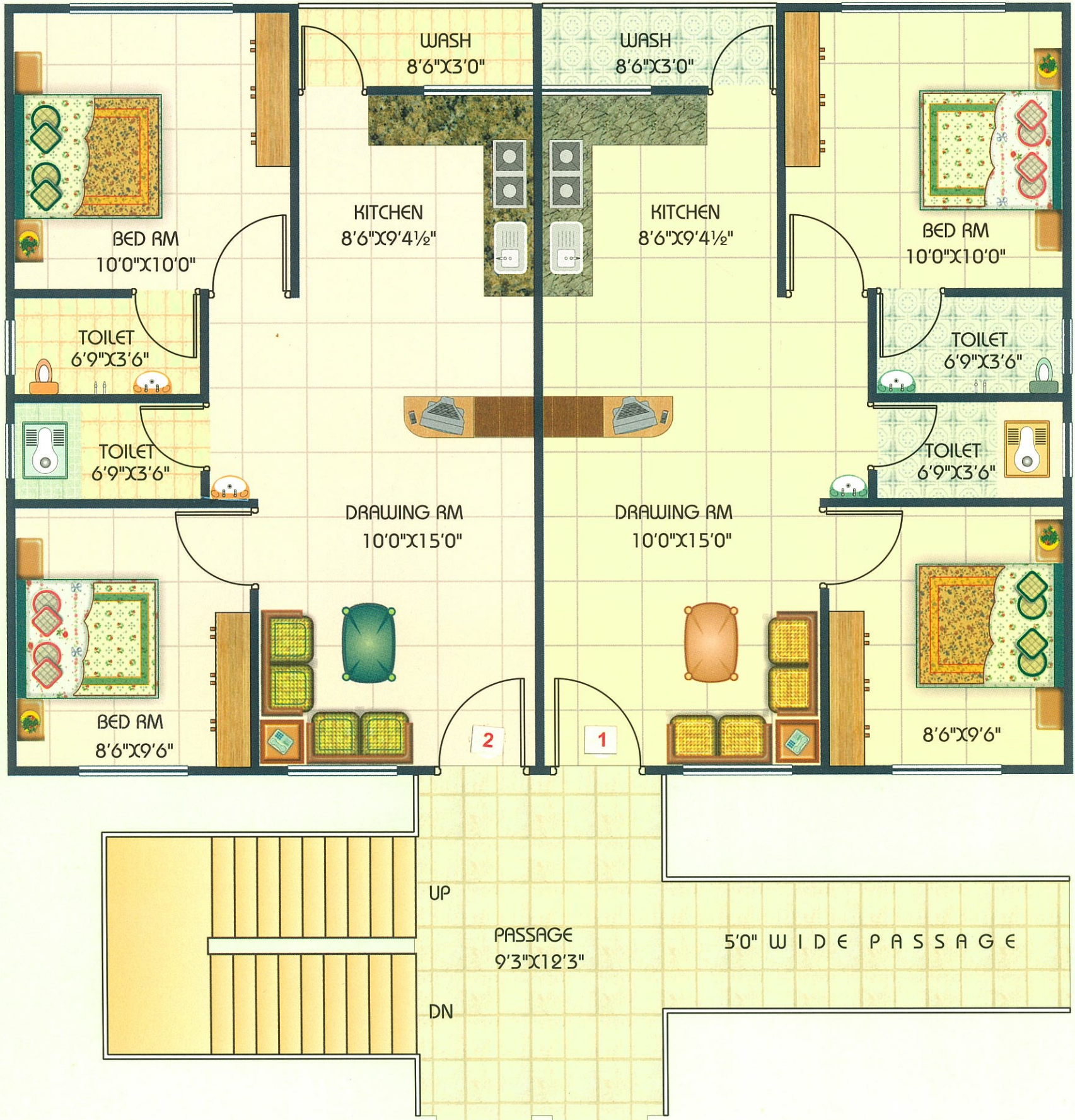




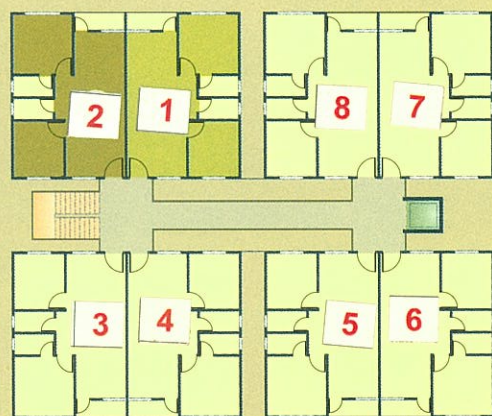
Unit Plan

C & F Type





D - Type





• AMENITIES •



Flooring : 20"x20" Porcelino Tiles Flooring in all Rooms.



Kitchen : Black Granite Platform & Glazed Tiles Dado up to Lintel Lvl. with ISI Stainless Steel Sink.



W.C. : Good Quality Glazed Tiles Dado up to 3' ht. with ISI Fittings.



Bath & Toilets : Good Quality Glazed Tiles Dado up to Lintel lvl. with ISI Fittings.



Door : Good Quality Flush Door with Oil Paint & Salwood Frame as per Planners Design.



Window : Fully Glazed Powder Coated Aluminum Section Window.



Electrification : Good Quality Concealed Wiring with Sufficient Points & Mcb for Safety.



Lift : Six Passanger One Lift of Standard Company.



Generator : For Lift, Common Passages, Parking & 150 watt in Each Flat.



Paint : Lapi Primer on Interior Walls & Good Quality Paint on Exterior Walls.

• CAMPUS •

~ Title Clear Project, Loan Paper Available. ~

~ Club House : Gymnasium & Indoor Games. ~

~ Sufficient Parking Space. ~

~ C. C. Roads For Easy Driving. ~

~ Decorative Main Entrance Gate With Security Cabin. ~

~ Vast Garden With Wonderful Landscaping & Children Play Area. ~

~ 24 Hrs. Water Supply From Bore Well. ~

• Location •

Presenting a lifetime fresh air zone full of oxygen, Free From dust, fumes and noise pollution.

6.5 Kms. from Railway Station & Bus-Stop, 4 kms. from Smimer Hospital, Sardar & Textile Market.



Key Plan



Project Consultant

Vertex

Consulting Civil Engineers,
Er. K. B. Vaghani
 B.E. (civil) M.I.E., F.I.V.
 303, Ruchita Apartment,
 Athugar Street, Nanpura, Surat.

Structural Engineer

Comten Engineers.

Er. Harish A. Patel,
 M. E. (civil)
 3rd. Floor., Kunal Complex,
 Deluxe Char Rasta,
 Nizampura Road, Baroda.

Legal Advisor

M. M. Talaviya

M.A. L.L.B.
 328, Shreyas Trade Centre,
 Mini Bazar, Varachha Road, Surat.

Developers

Shyam Residency,

Kishorbhai Kheni
 B. No. 15, Bhagat Kakani Wadi
 At Post Kumbharia, Surat.

Notes

- Legal Document, GEB, SMC - Water / Taxes, Society Maintenance, (service Tax, Vat - If Applicable), will be beared by The members.
- External & Internal Changes Shall Not be allowed.
- This Booklet is for easy guideline of project Only, it is Not part of any agreement. It can be changed without prior notice. All rights reserved.
- Any Modification in Rules & Regulations by any authority, are bound to all members.