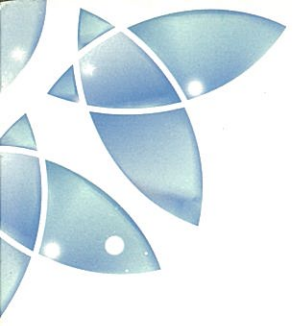




*Shyam*  
Shrusti

A Project By





happiness | heaven | home



**KKK** is a symbol of excellence in conceptualizing and developing quality infrastructure, to provide greater value for customers and create habitats in harmony."

**KKK** prime properties, one of Surat's leading Real Estate Developers established in 1985. The Group is currently developing in excess of 2.5 million sq. ft. of prime real estate over 15 Projects in and around Surat. With a vision to build better lives, **KKK** prime properties exceed the expectations of customers through innovative, world-class solutions, thereby creating value and at the most opportune moment.

*Our Core strength is Quality of Construction, Customer service, Value for Money, Township design, Transparent Business Practices, High Standard of Maintenance and Timely delivery of Properties.*





*“ We are not just known for our creations,  
but also known for the relationships we build.”*



*Experience the glory of green.....*

**Shyam Shruti** stretched over a sprawling 1 lac. Sq.ft. nested amidst a beautiful green expanse provides a rare but soothing visual relief. Haven of fine living where serene environs and lush greenery, add a flavour of mystical richness to your everyday life.



Lay Out Plan  N





Raju Shop

ColorPlus

AsofPolv

SAMSUNG

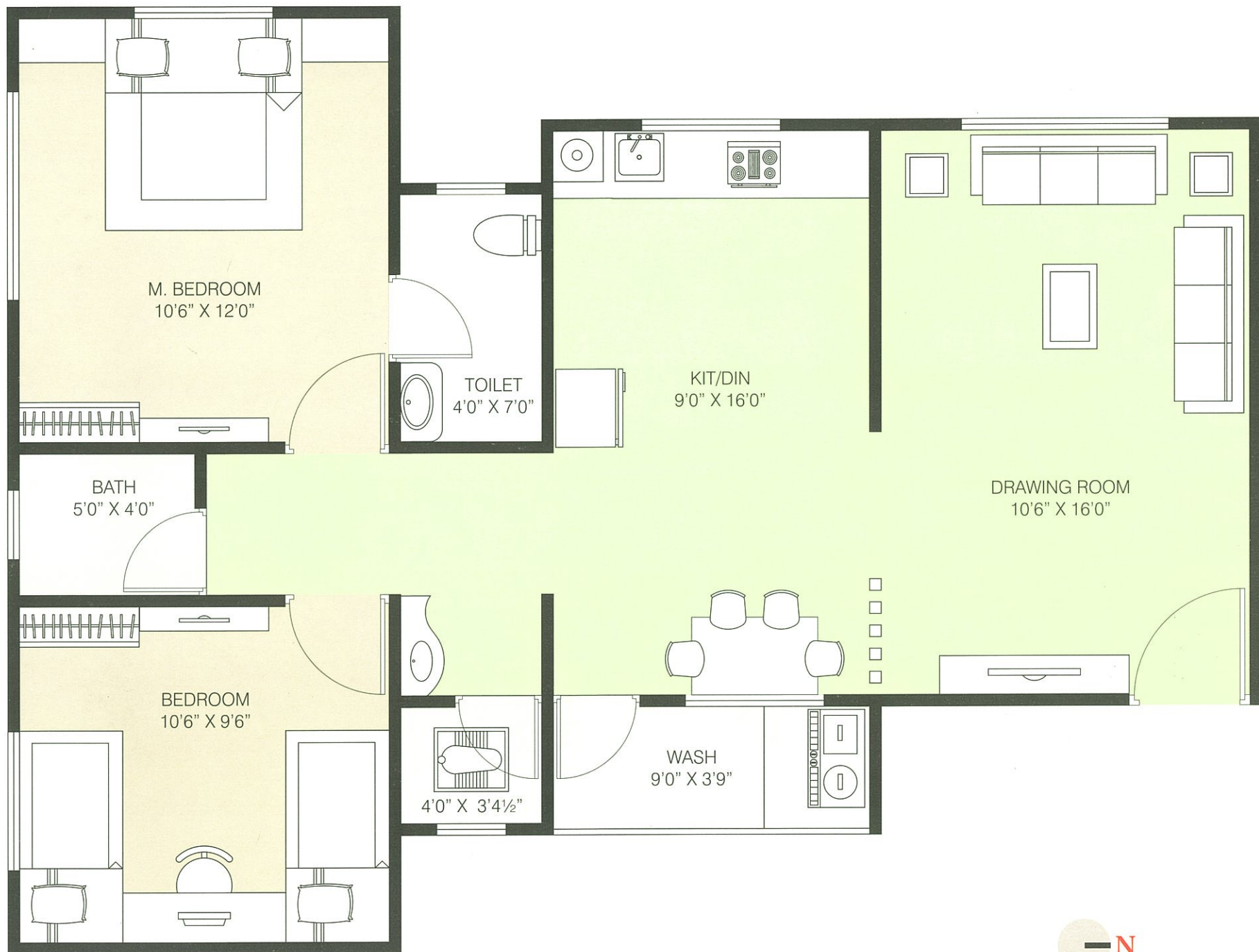
SAMSUNG



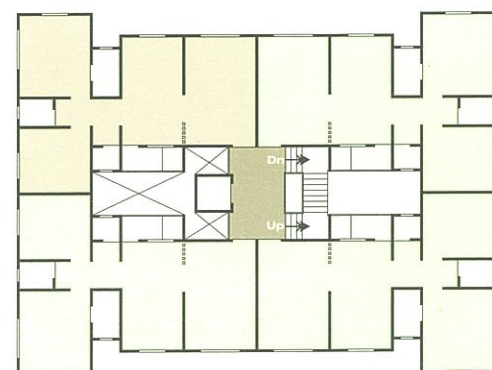
# Shyam

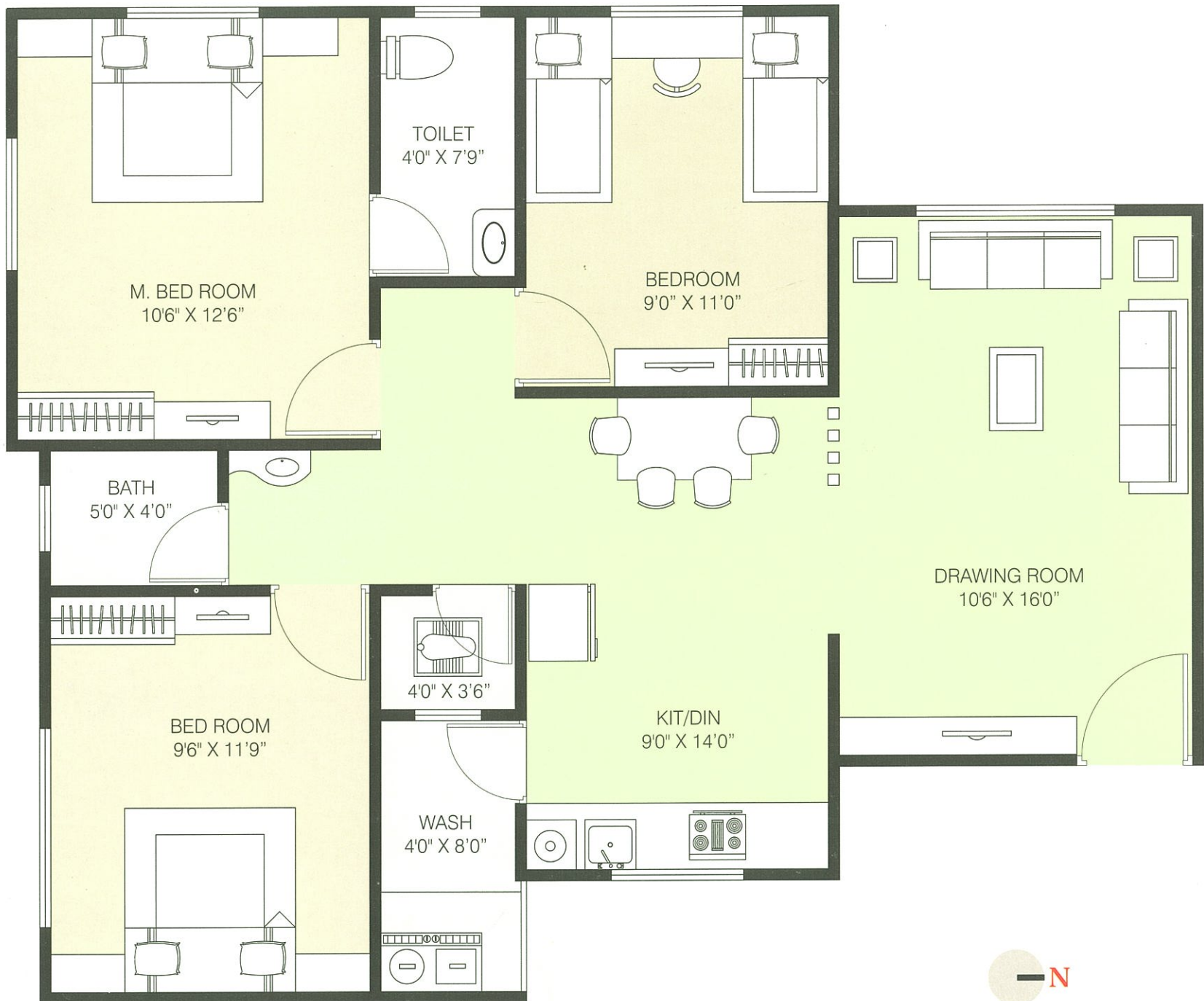
Shrusti



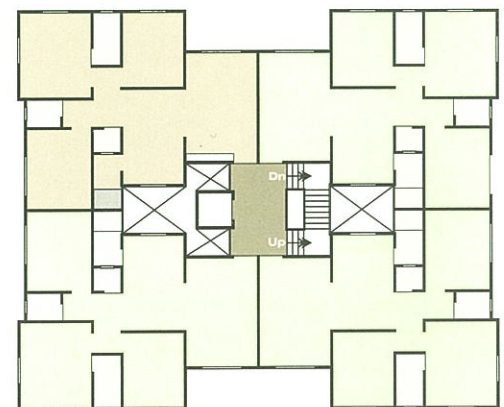


A-H  
2 BHK



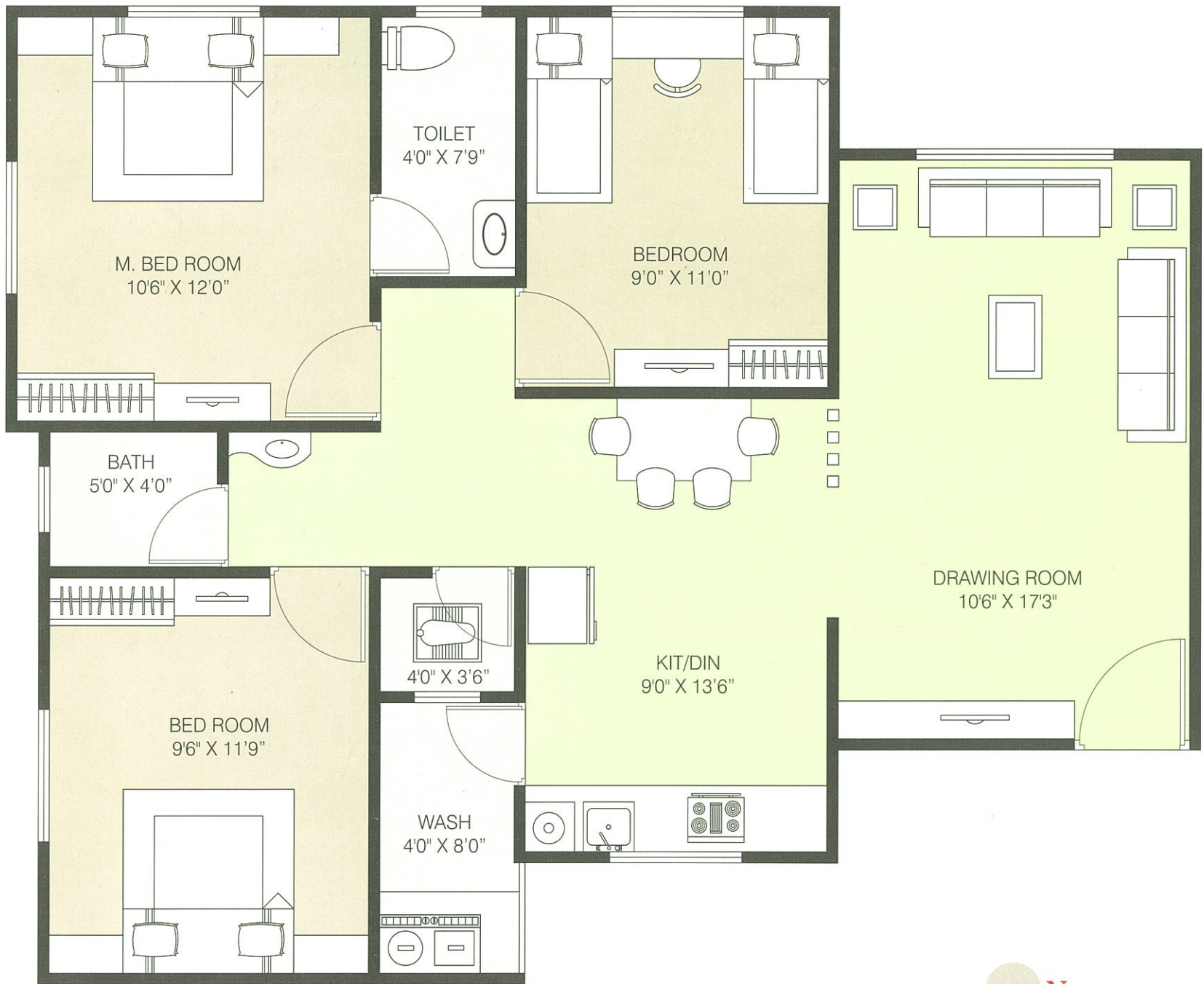


**B-C**  
3 BHK

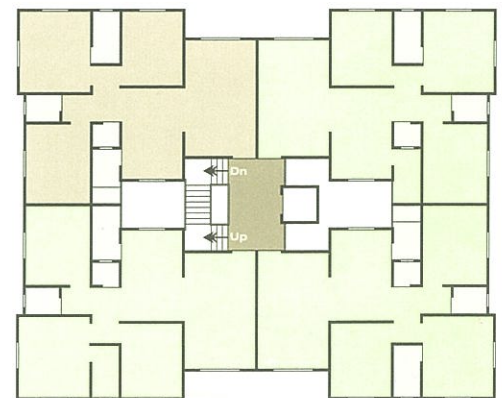


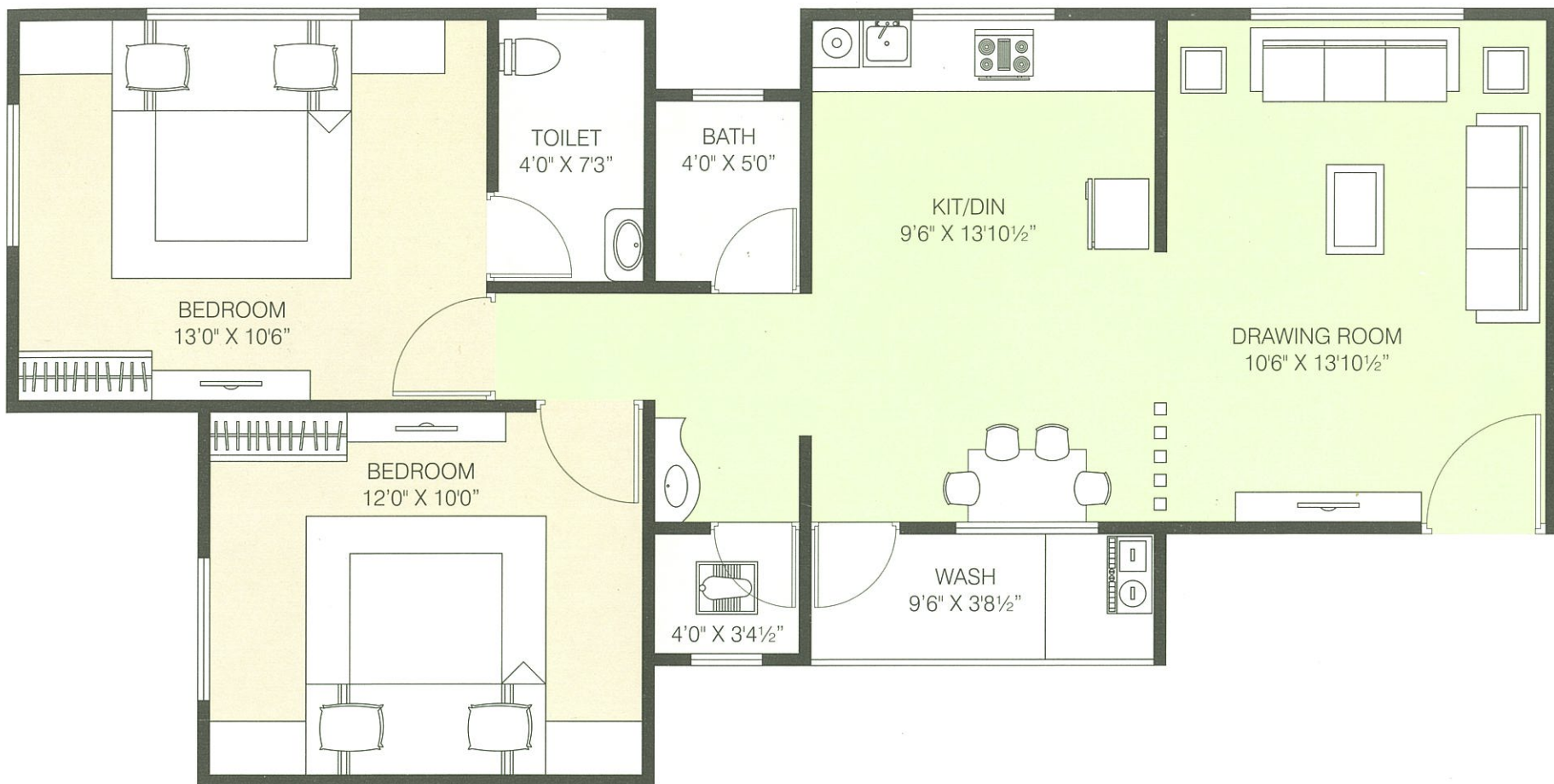




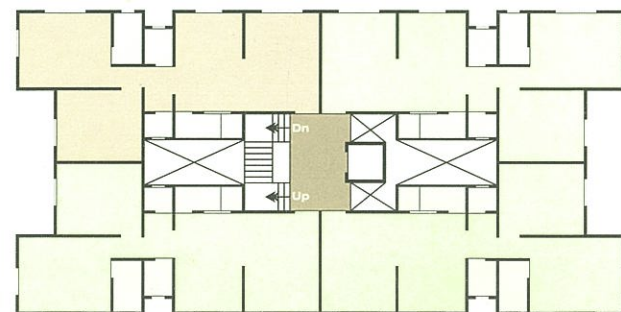


F-G  
3 BHK





I-J  
2 BHK



# Specification



## Flooring :

Good quality 2' 0" X 2' 0"  
Granamite tiles.



## Paint :

Premium quality distemper colour direct on  
Inside wall, Asian paints or equivalent on outside.

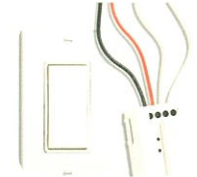
## Kitchen :

Black granite platform with steel sink  
of good quality. decorative ceramic  
tiles cladding in dado.



## Electrification :

Modular switches with ISI standard  
concealed wiring of good quality,  
**Over voltage protector** in each flat.



## Bath/Toilet :

Full height decorative ceramic tiles dado.  
Flush door with black granite frame.



## Power Back up :

Kirloskar or equivalent make generator  
with power back up in each flat.

## Plumbing :

ISI standard plumbing fitting of good quality.



## Security system :

CCTV camera in building premises &  
main gate for safety.



## Door :

Water proof flush door of ISI quality.



## Gas :

One connection in each flat.

## Windows :

Powder coated aluminium section window,  
Black granite sill on four side.



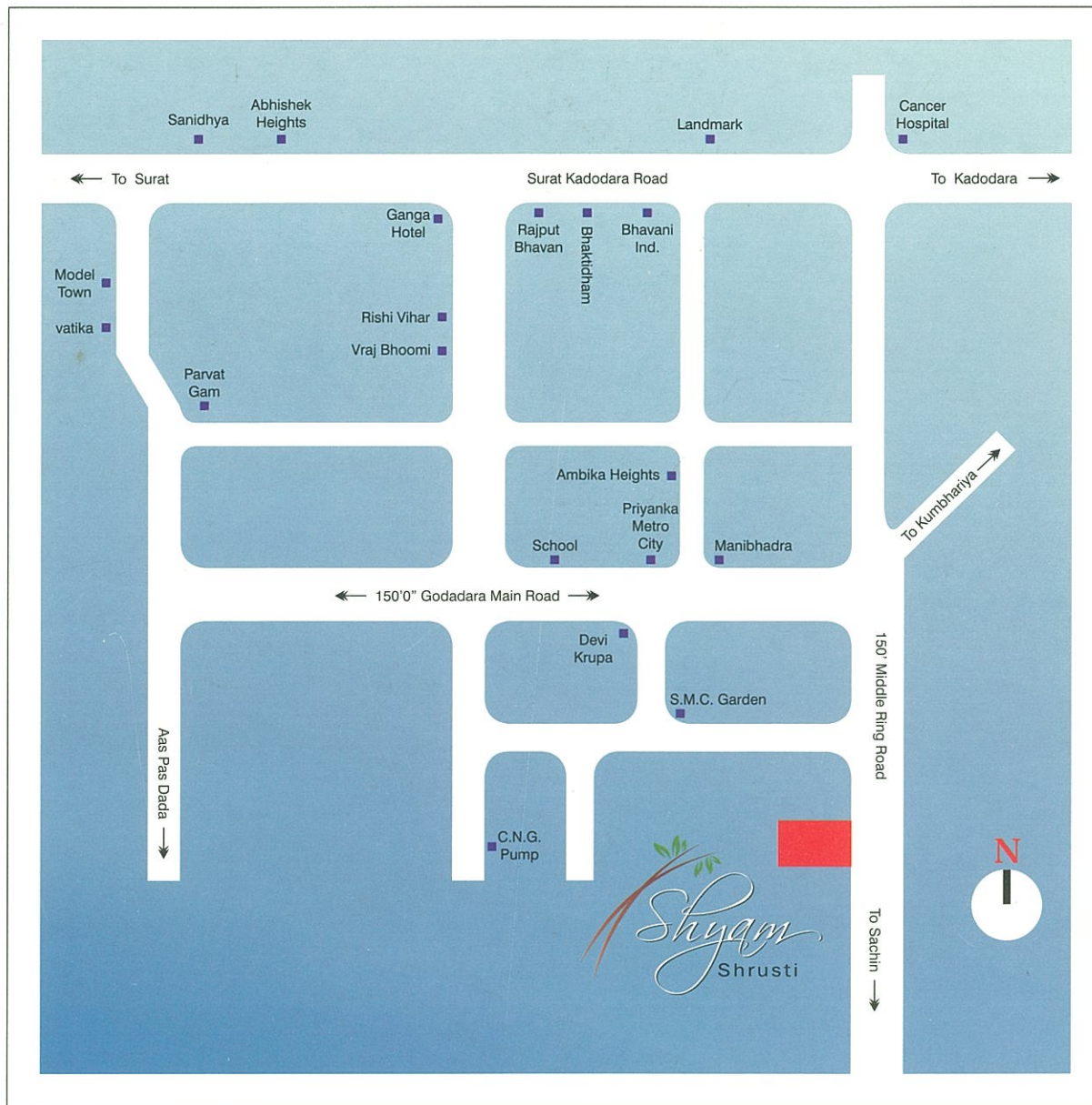
## Water Purifier :

Good quality Water purifier in each flat.





Offering a blend of tranquil green surroundings and the convenience of the city, your home in **Shyam shrusti** will become the medium for you to explore a life full of new possibilities. It will provide you with the advantage of strategic location of 150 ft middle ring road, godadara, which is **3 kms of Surat Textile market, 5 kms from Railways station, 1 kms from Hospital, 2 kms from Bhaktidham.**



A Project By  
Kishorbhai Kheni, Rajiv Kheni



Project Consultant



Er. K.B. Vaghani  
Nanpura, Surat.

Str. Engineer

Jalil Sheikh  
Ring Road,  
Surat.

For Booking

99090 24123  
99090 24124

**Terms & Condition :**

- Legal documents, GEB charges, SMC tax, service tax, VAT/GST (if applicable) shall be borne by members.
- Any additional charges or duties apply by the govt./local authorities during or after the completion of the scheme will be borne by the member.
- External & internal change will be not allowed.
- All rights are reserved by developers for any modification in any details in booklet without prior notice.
- Any thing shown in this brochure are indicative & can not be a part of any agreement.
- Window grill charges extra.



*"It's real  
Every dream delivered"*

A Project By

